

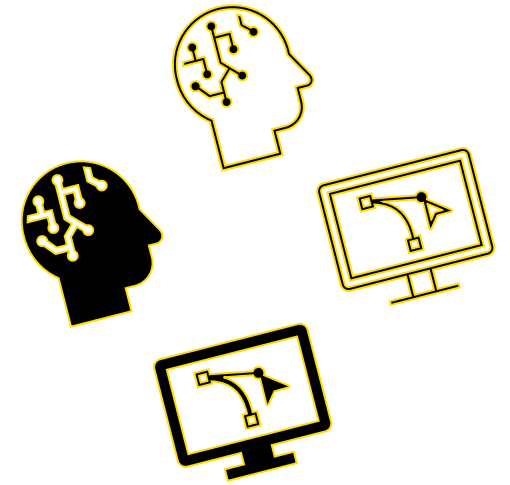
AI Symposium, 21 November 2024



UNSW
SYDNEY



UNSW
AI Institute



Patricia O'Shane Building (E19)

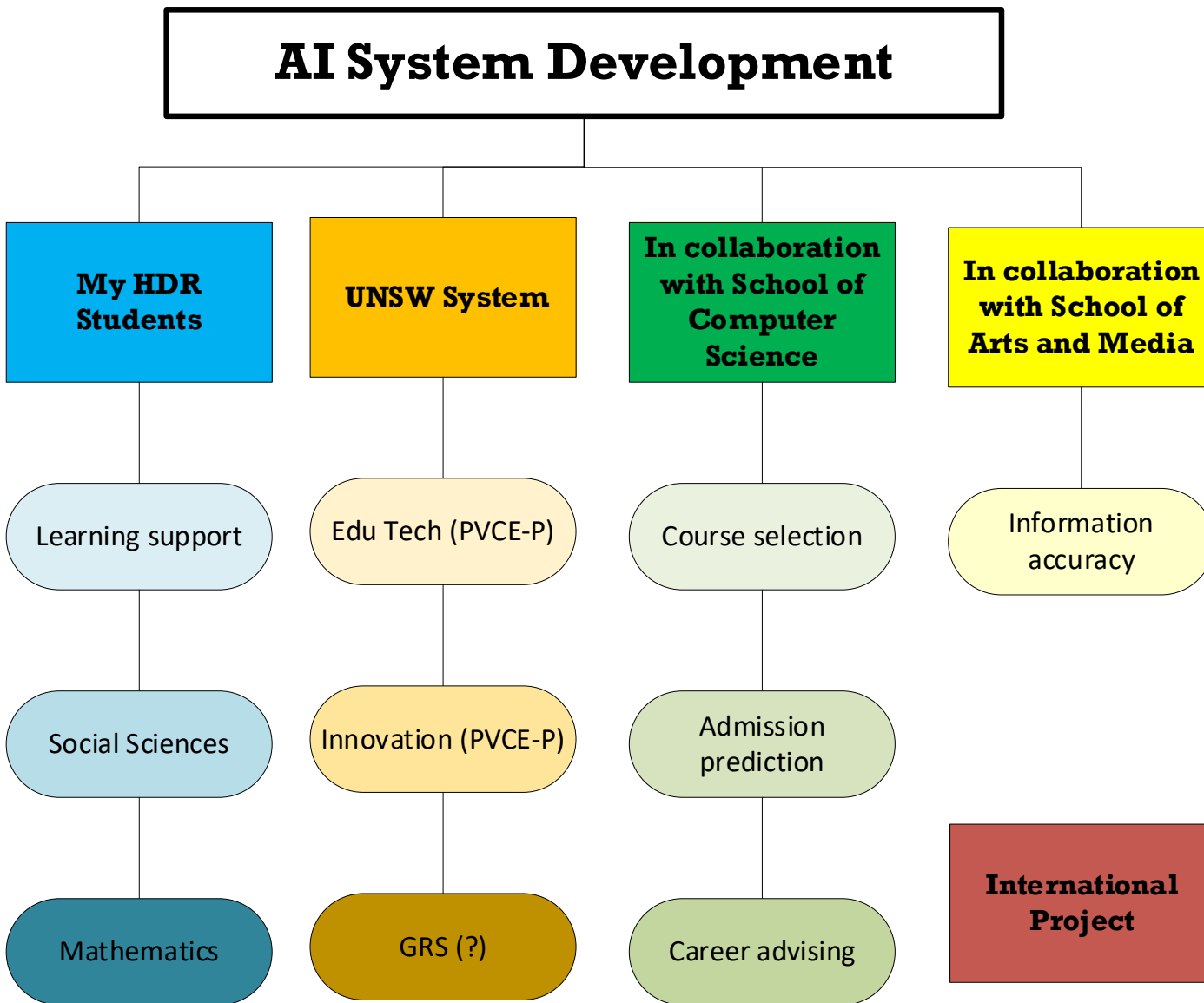
AI-based chatbots for
educational purposes:
academic and career
guidance

Professor Jihyun Lee School of Education

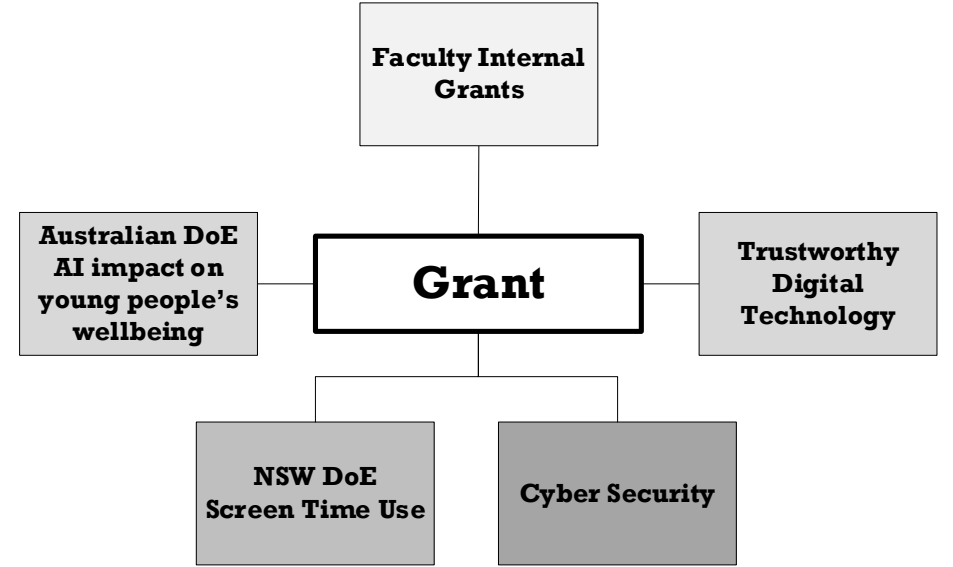
B. AI in Business, Education and Training
Session 6. AI-based chatbots for educational
purposes: Academic and career guidance
At 9:40 (room 105)

My Current AI Projects (2023 - ongoing)

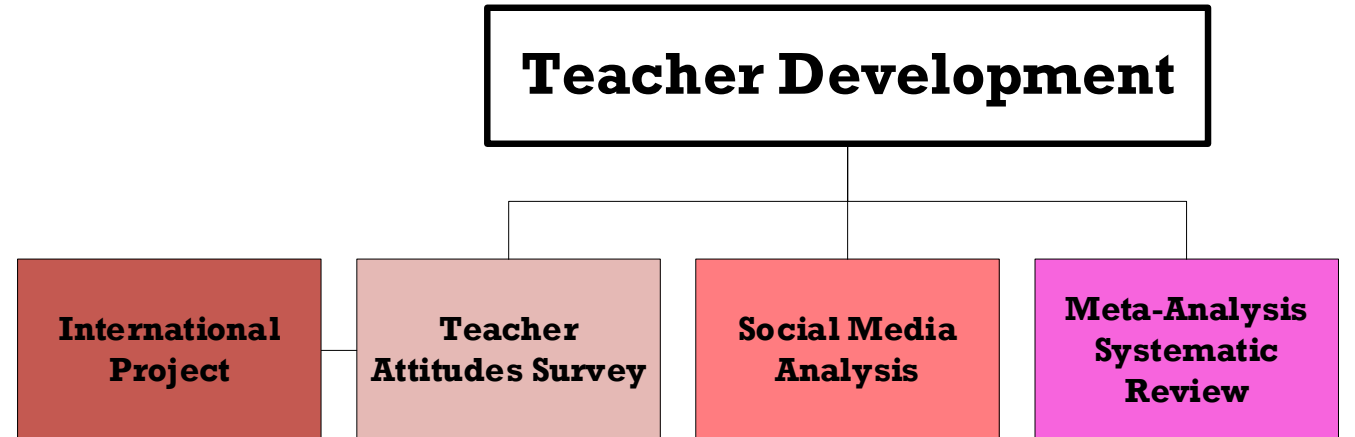
AI System Development



Faculty Internal Grants



Teacher Development



AI System Development

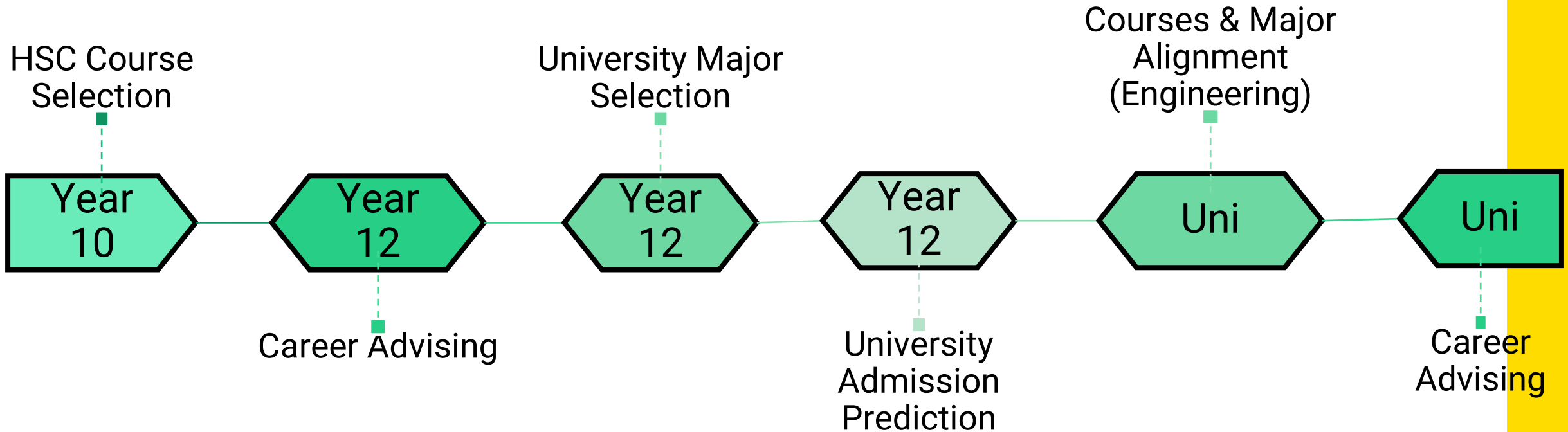
**In collaboration
with School of
Computer
Science**

Course selection

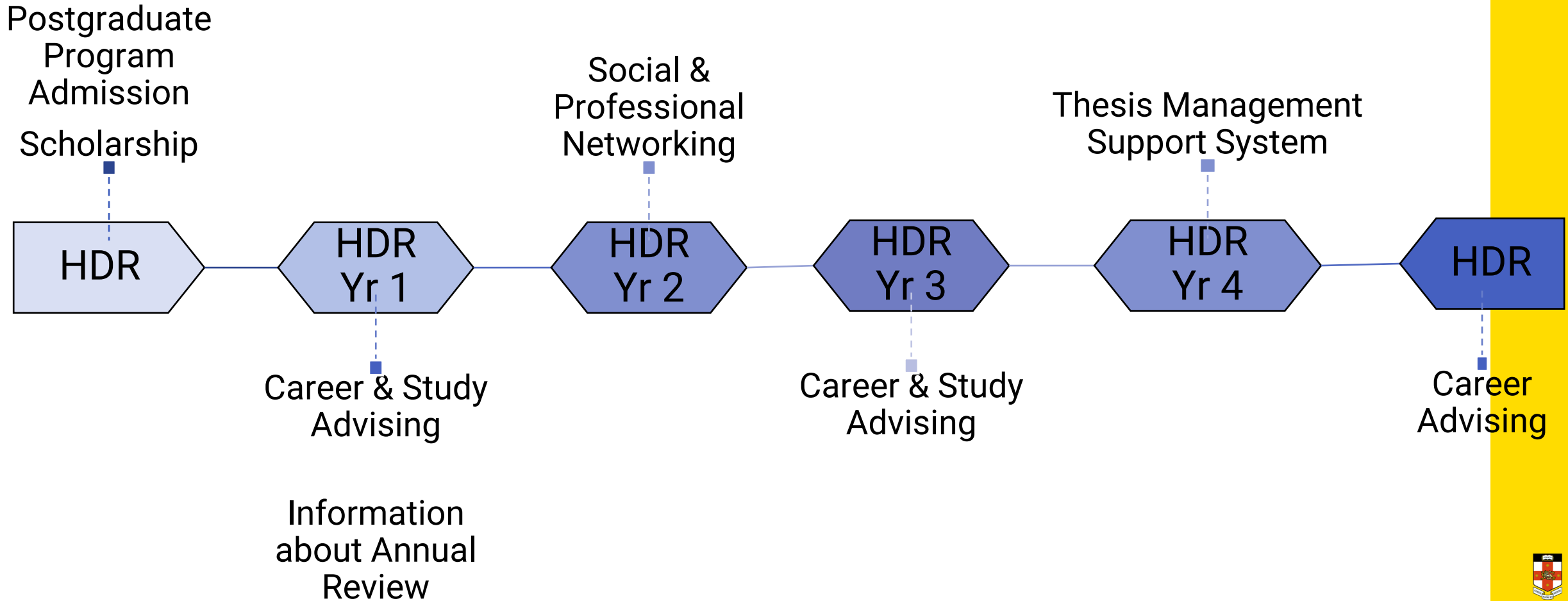
Admission
prediction

Career advising

AI System Development: Year 10 to University Undergraduate Programs

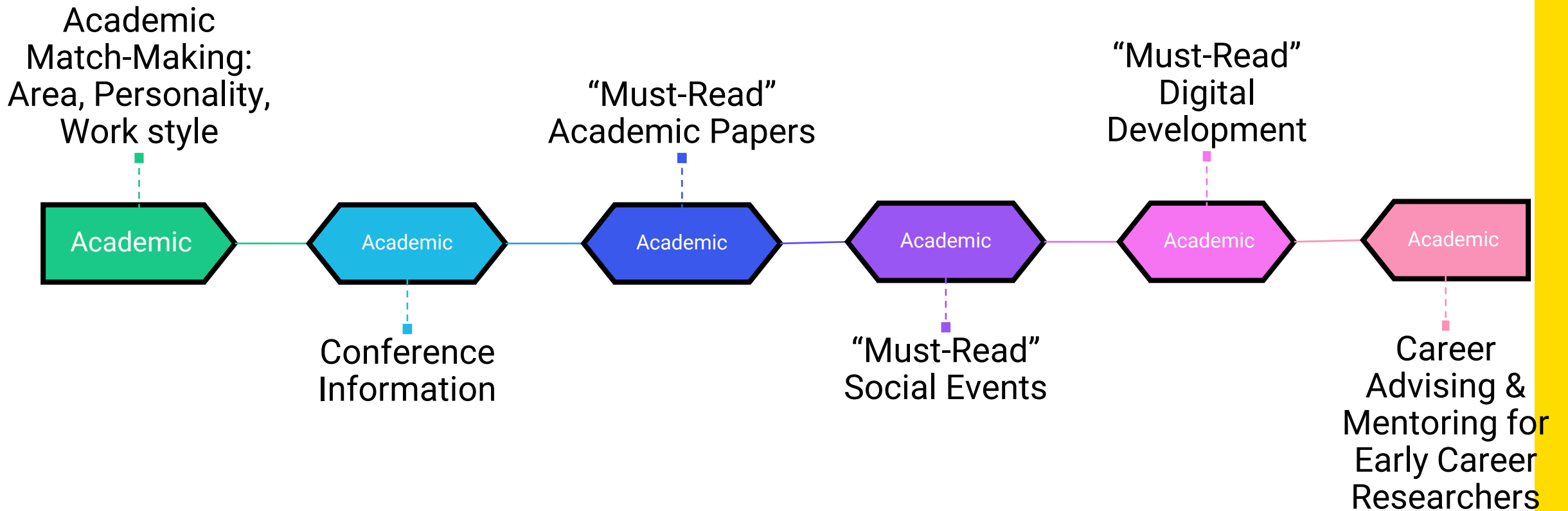


AI System Development: Postgraduate-Level





AI System Development: Researchers



AI Applications in Education

Thank you!

jihyun.lee@unsw.edu.au

