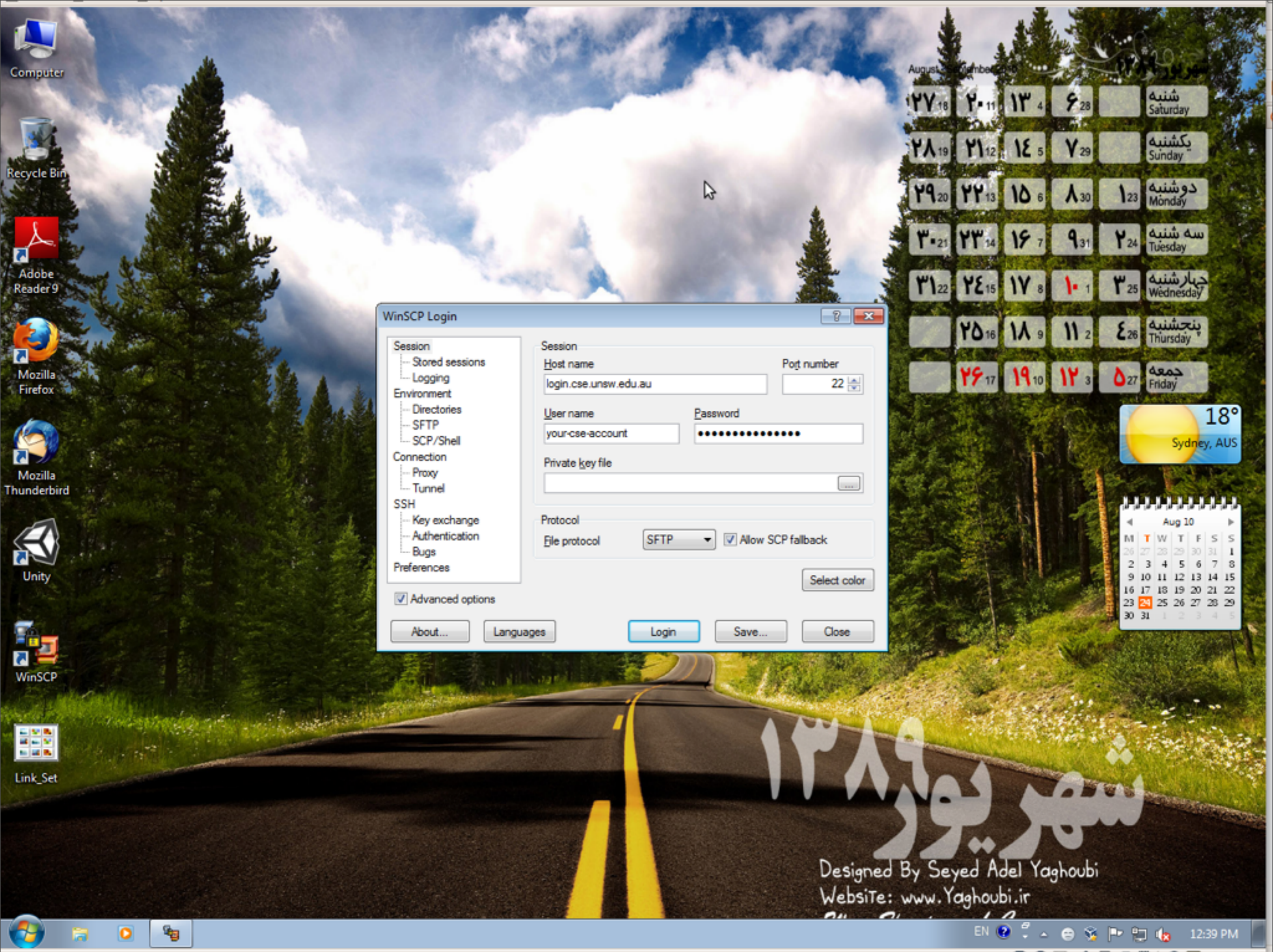
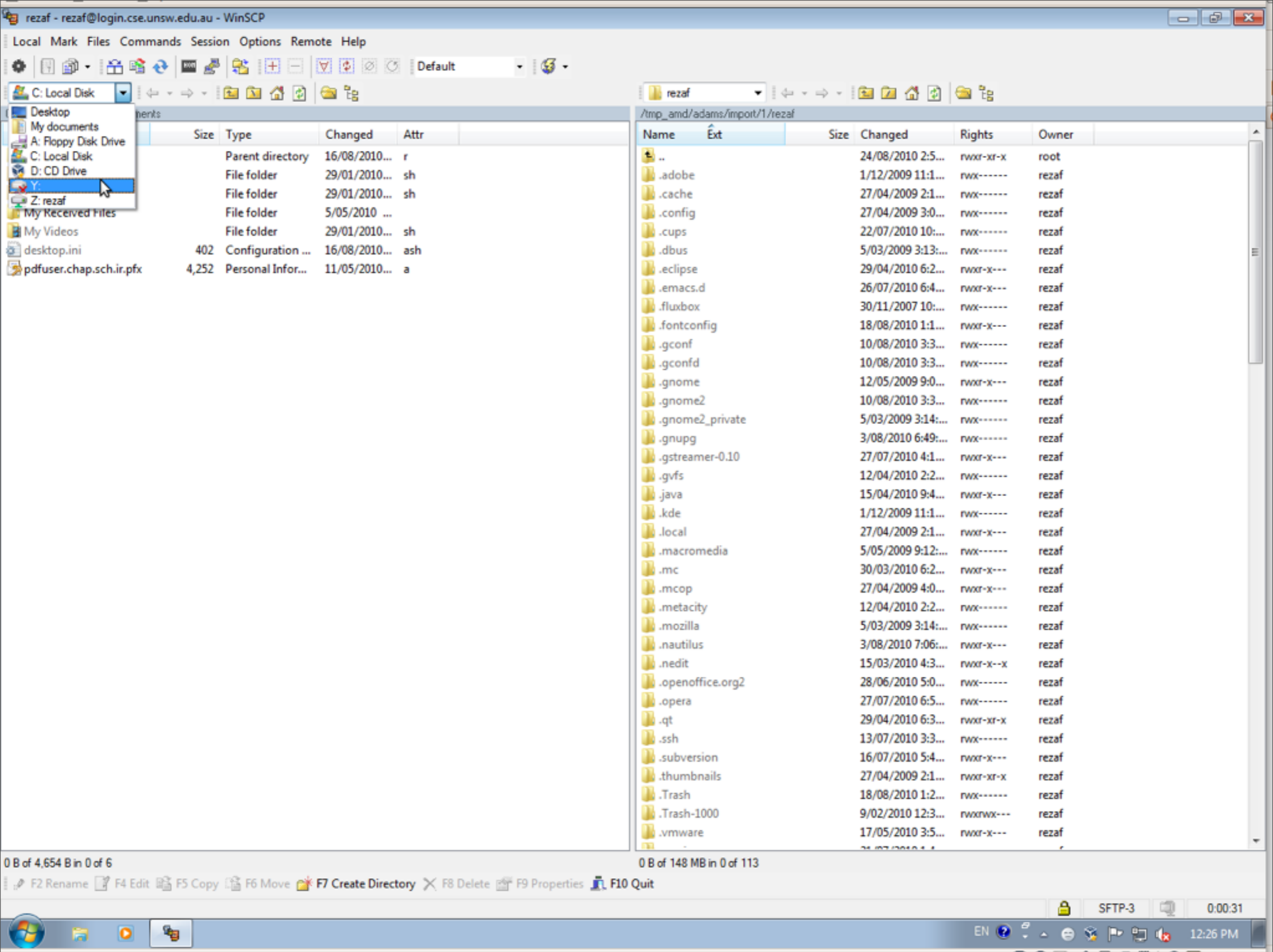


COMPI 400

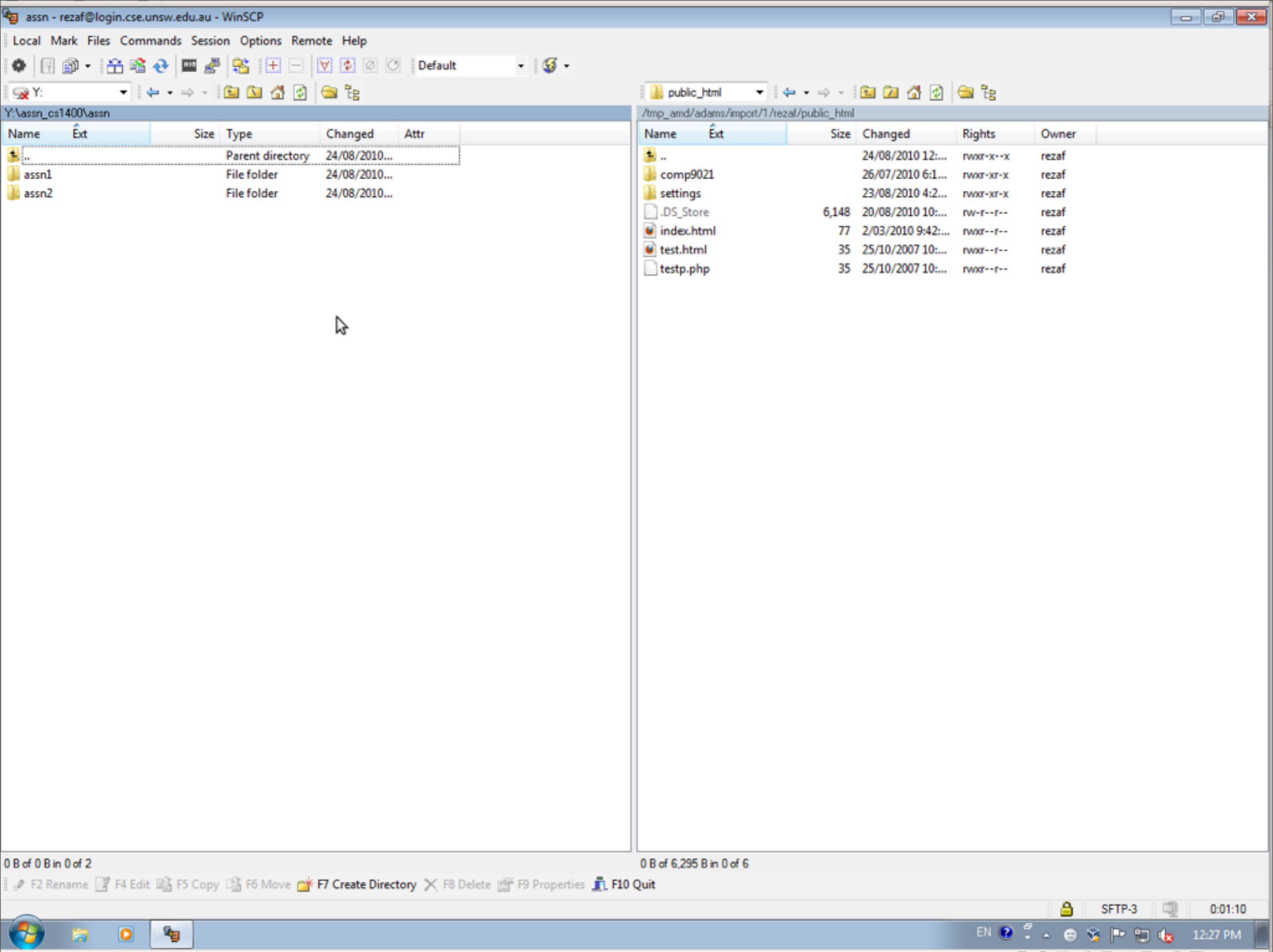
Using WinSCP to upload your assignment to
your cse folder



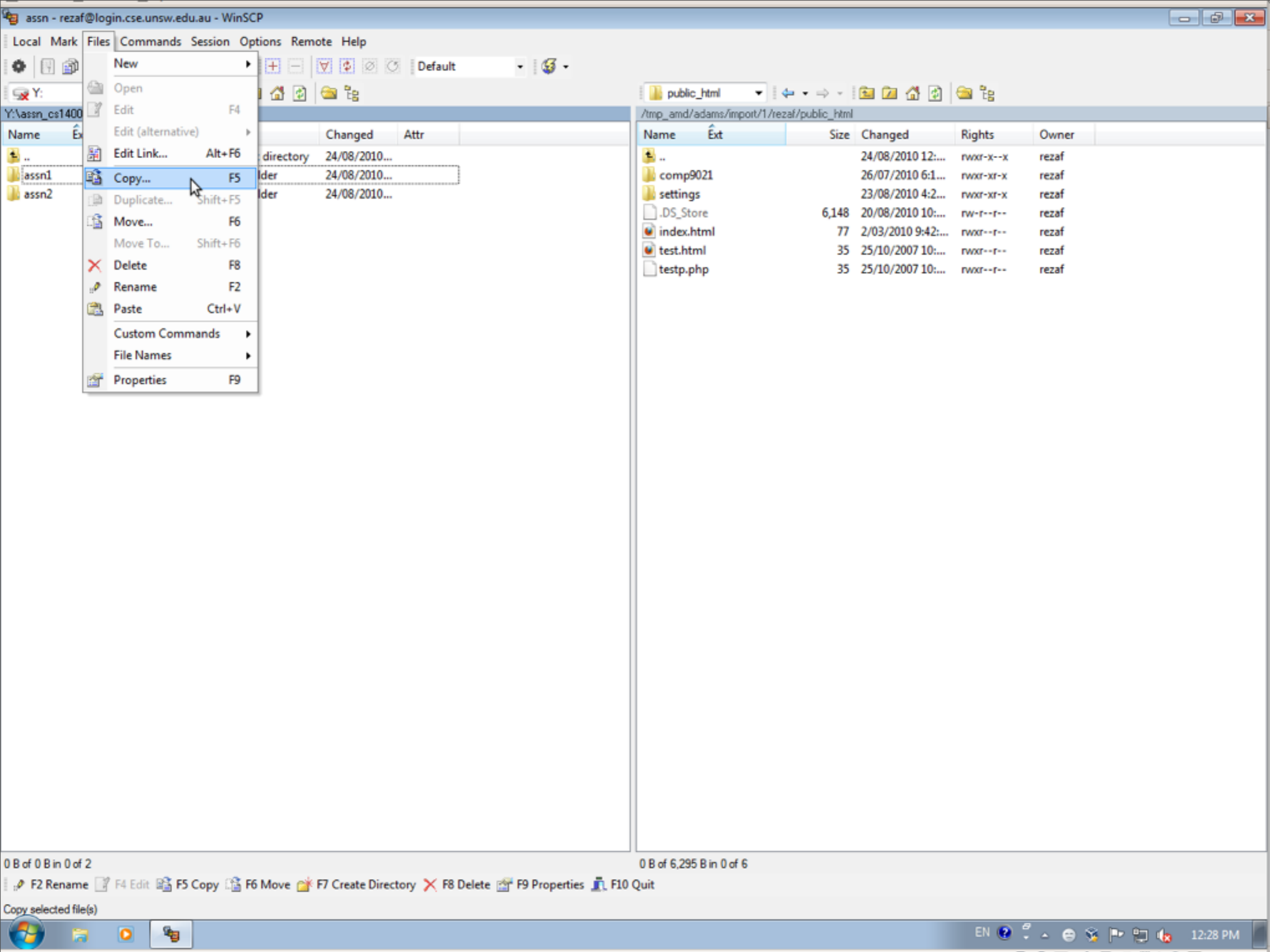
Run WinSCP and enter Host info (login.cse.unsw.edu.au, port: 22)
Enter your cse-user name and password



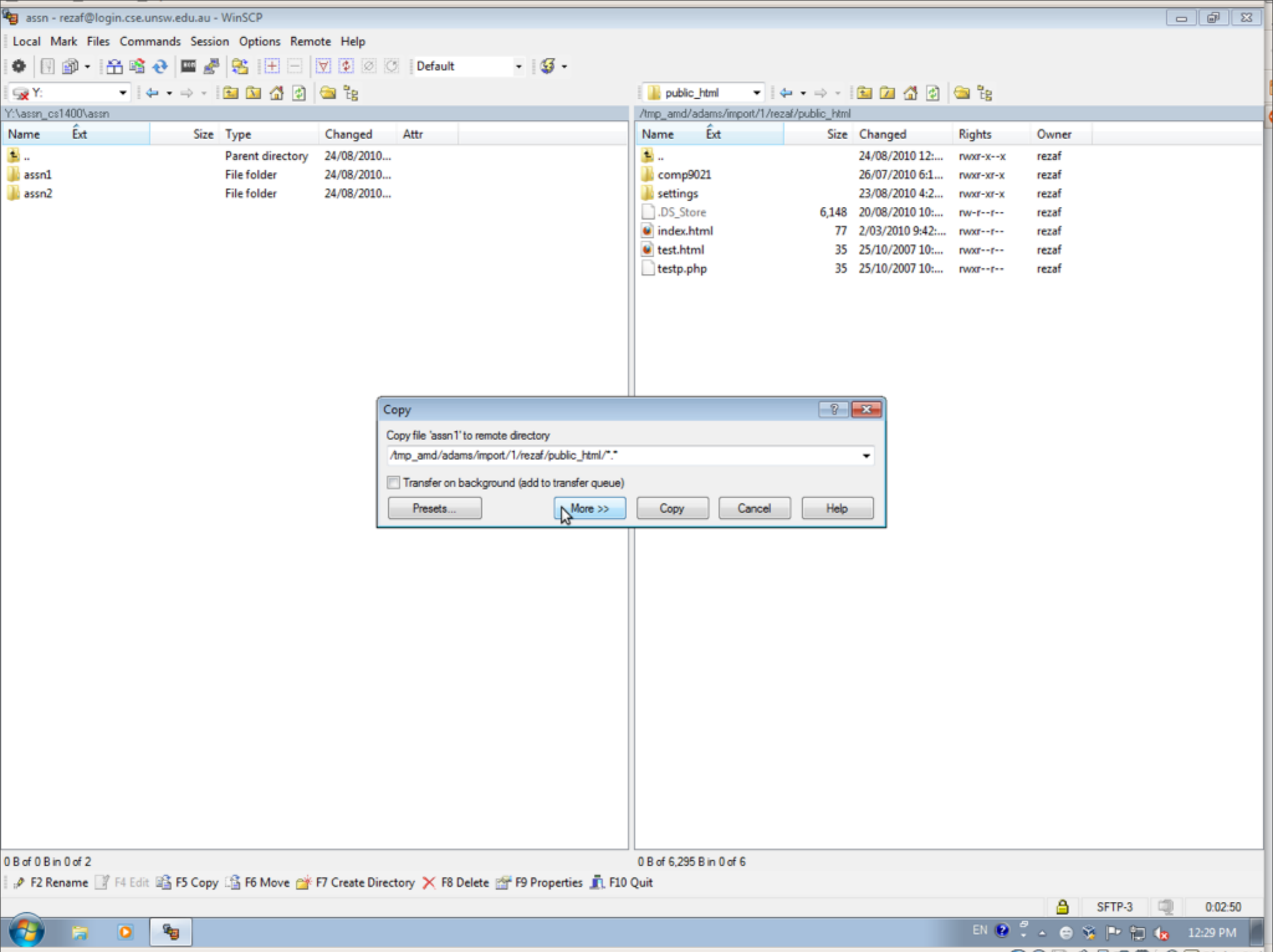
you have access to your local folders in one side
and your home directory (on cse server) on the other side



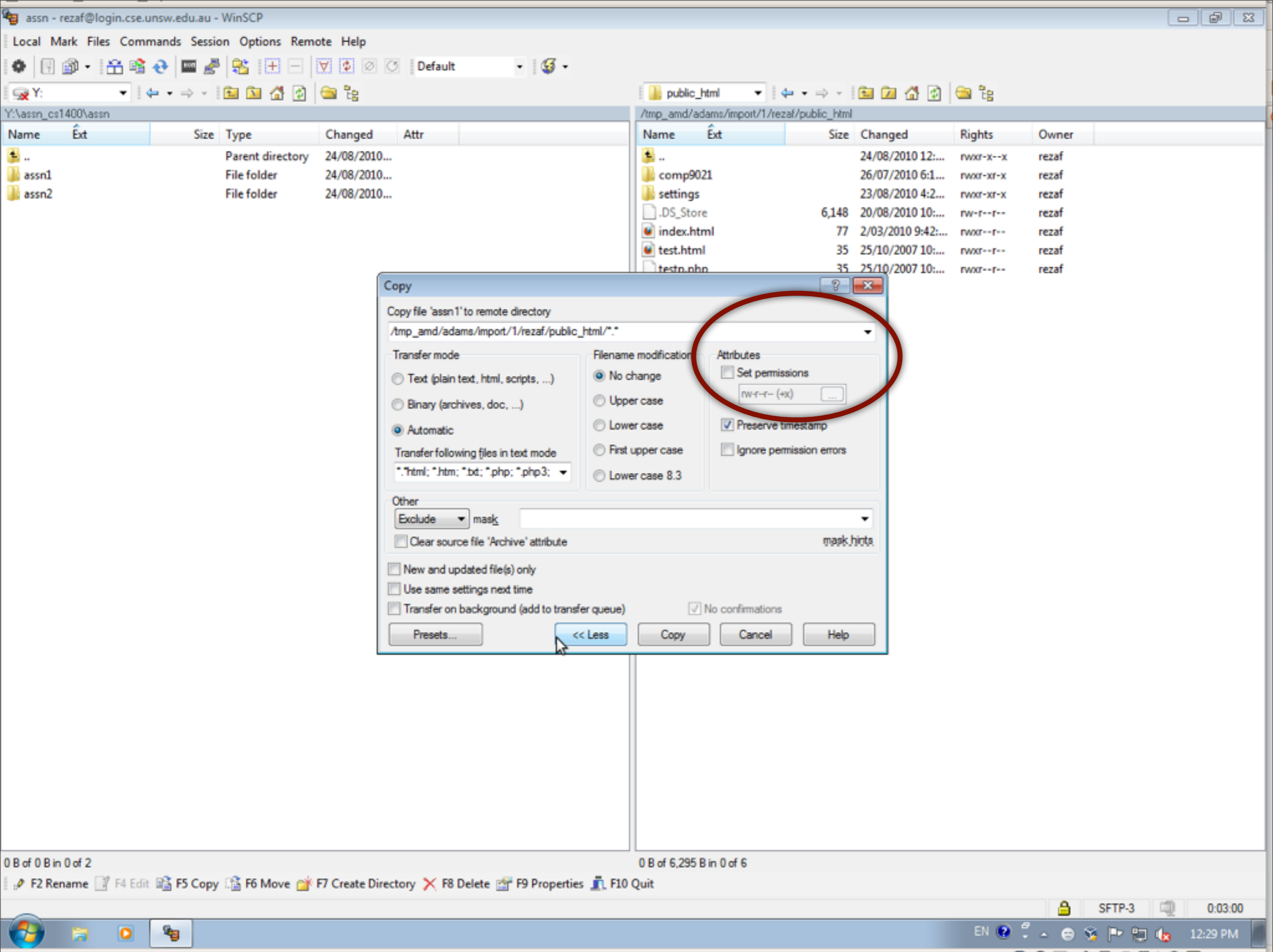
Go to public_html folder in cse side
Go to your local folder which has assignment folder



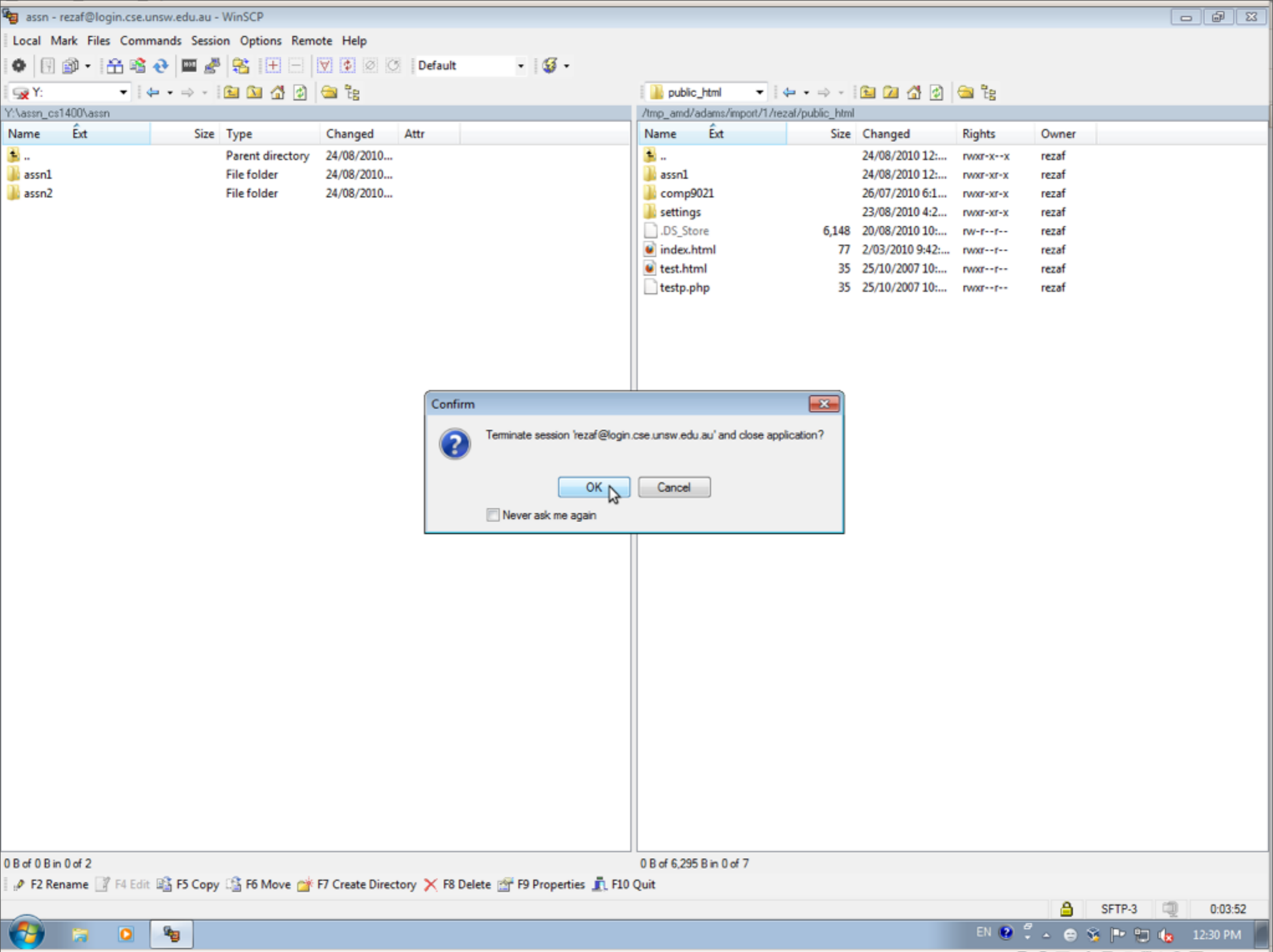
Select your assignment folder
Use 'Files' in Menu and Choose 'Copy'



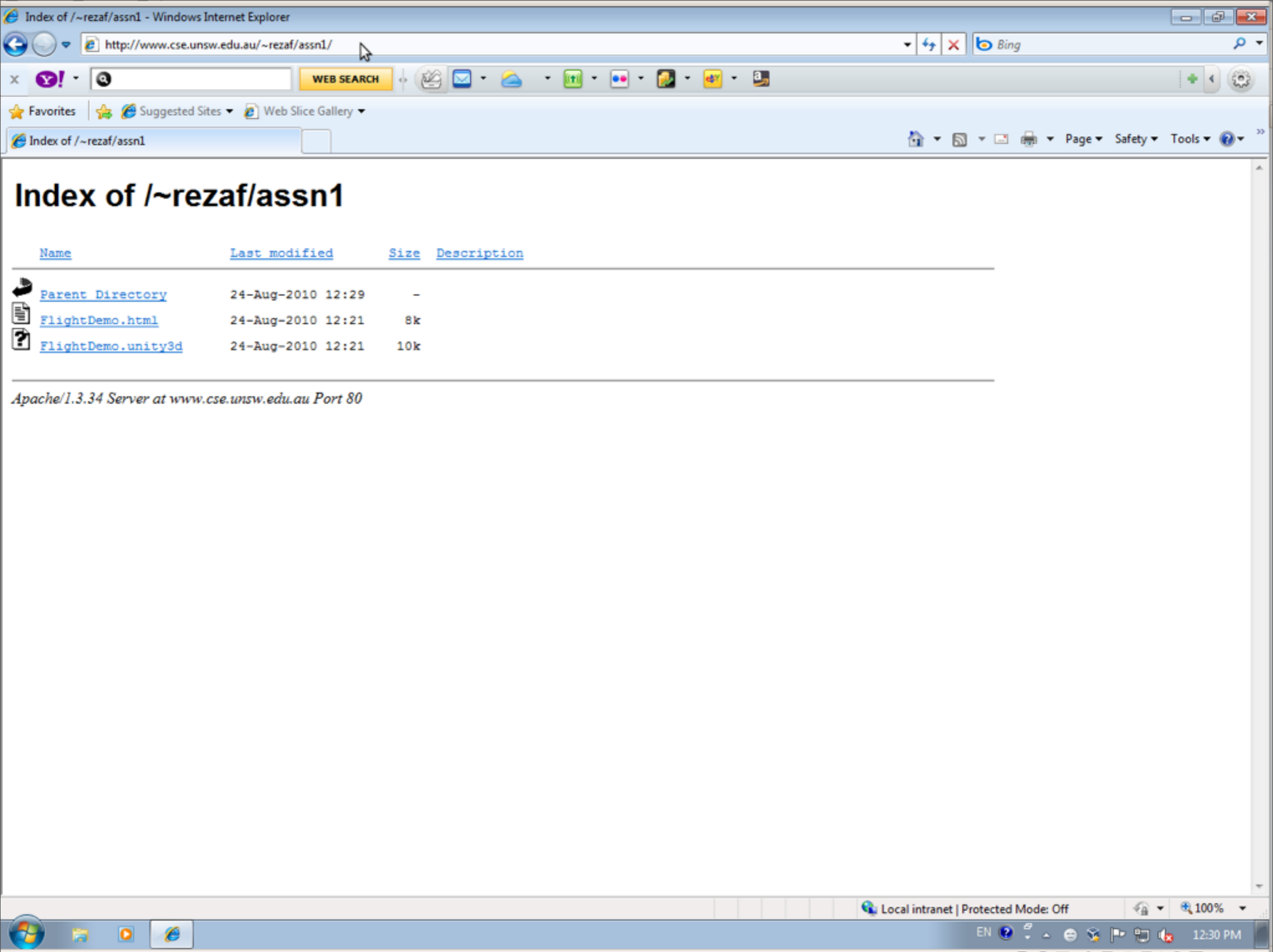
Choose 'More' Button



Make sure permission has three 'r'
and then Press 'Copy' Button



The assignment folder must be copied in other side
Exit from the WinSCP



Check if the assignment is accessible
use <http://www.cse.unsw.edu.au/~username/assn1>
and choose the html file